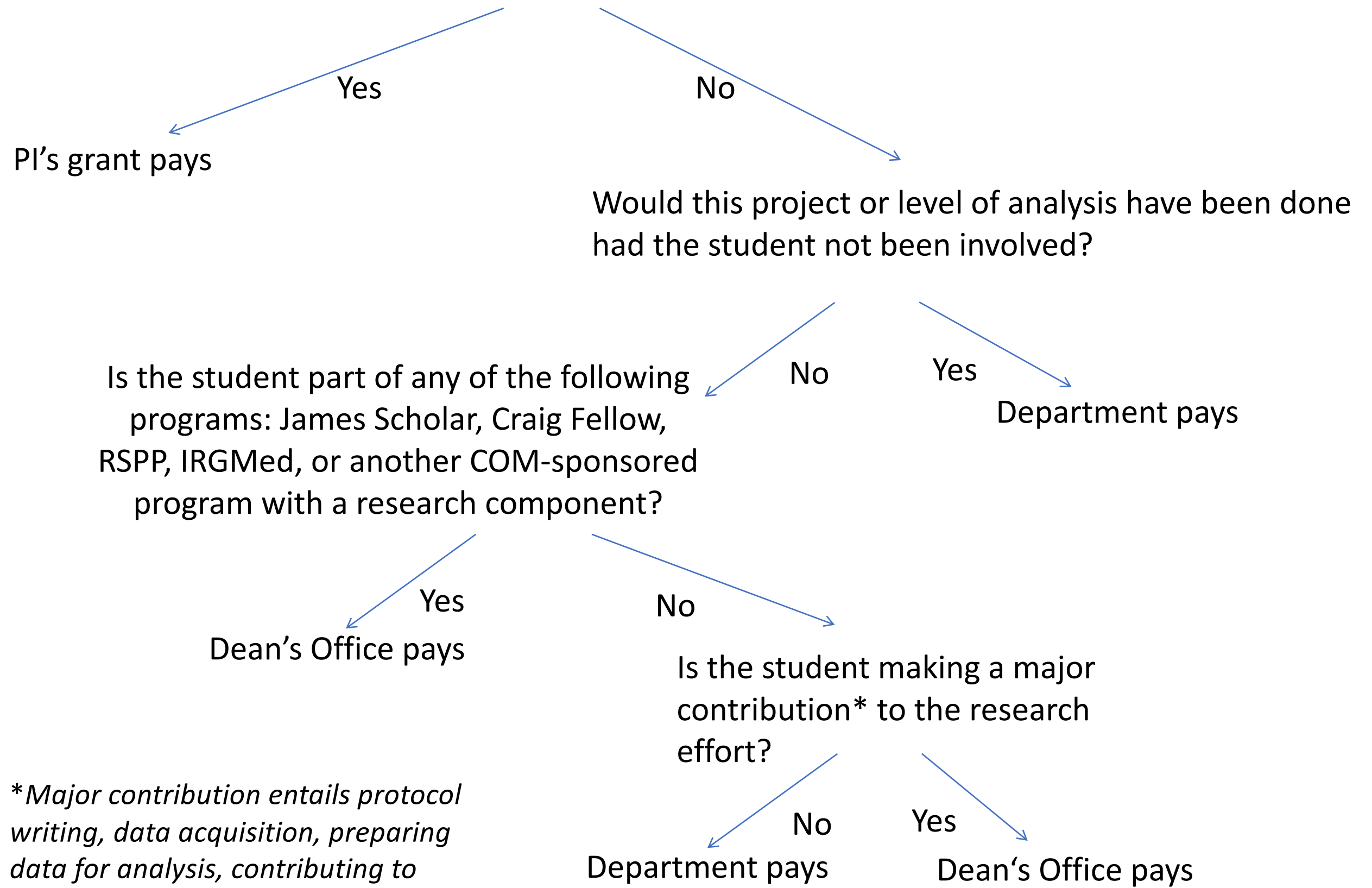


# Students

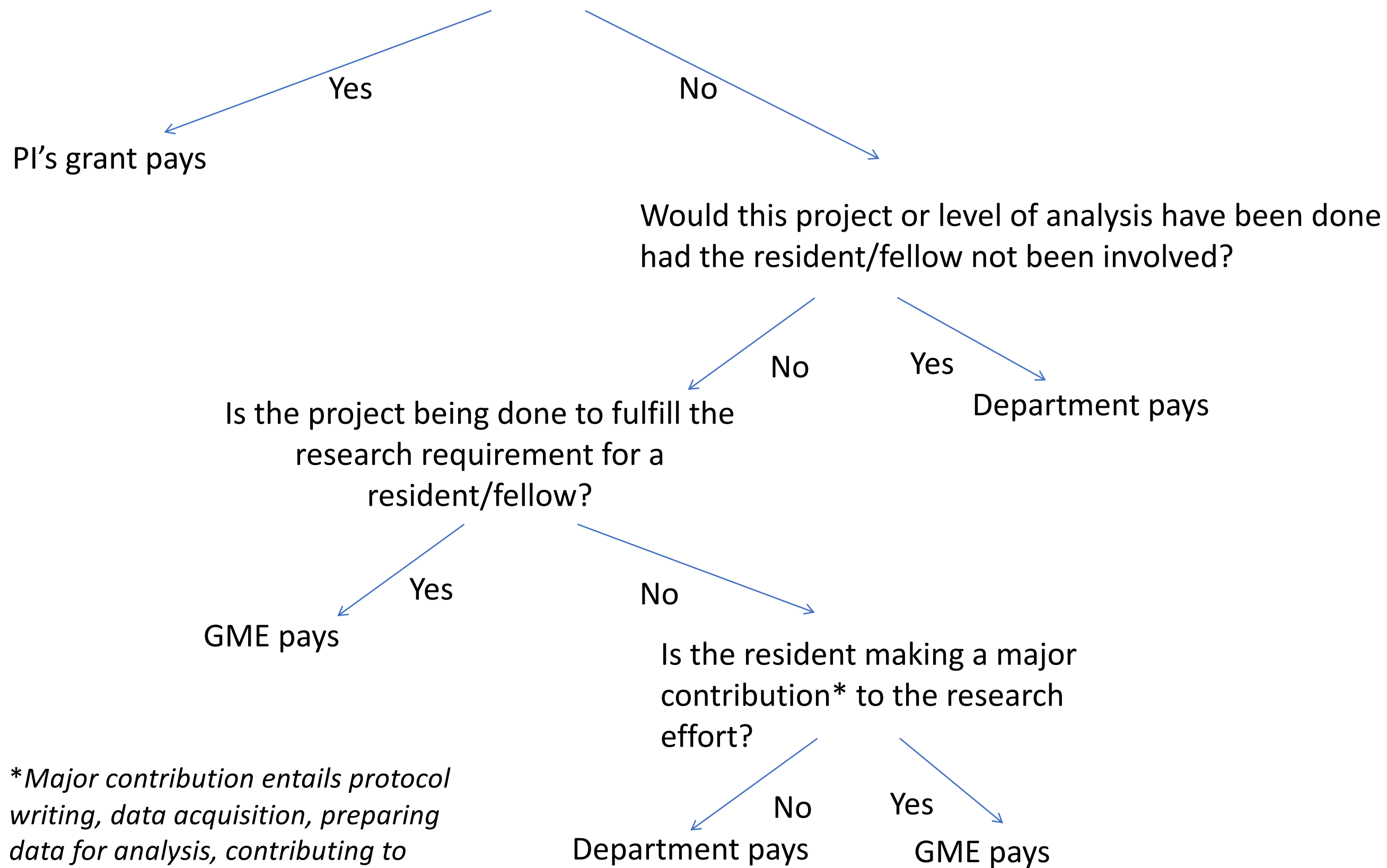
Does the project fall within the scope of a grant the PI has, which has money for stats support?



*\*Major contribution entails protocol writing, data acquisition, preparing data for analysis, contributing to manuscript writing*

# Residents/Fellows

Does the project fall within the scope of a grant the PI has, which has money for stats support?



*\*Major contribution entails protocol writing, data acquisition, preparing data for analysis, contributing to manuscript writing*