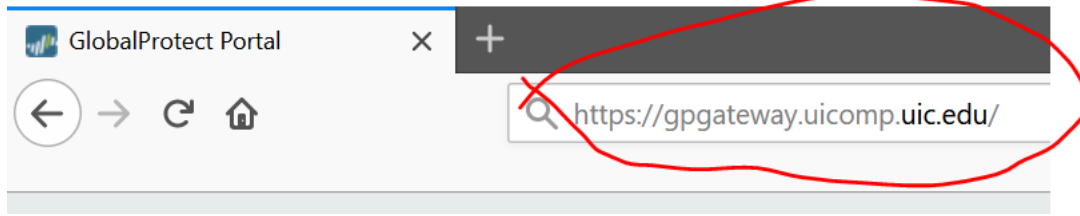


Global Protect VPN Instructions

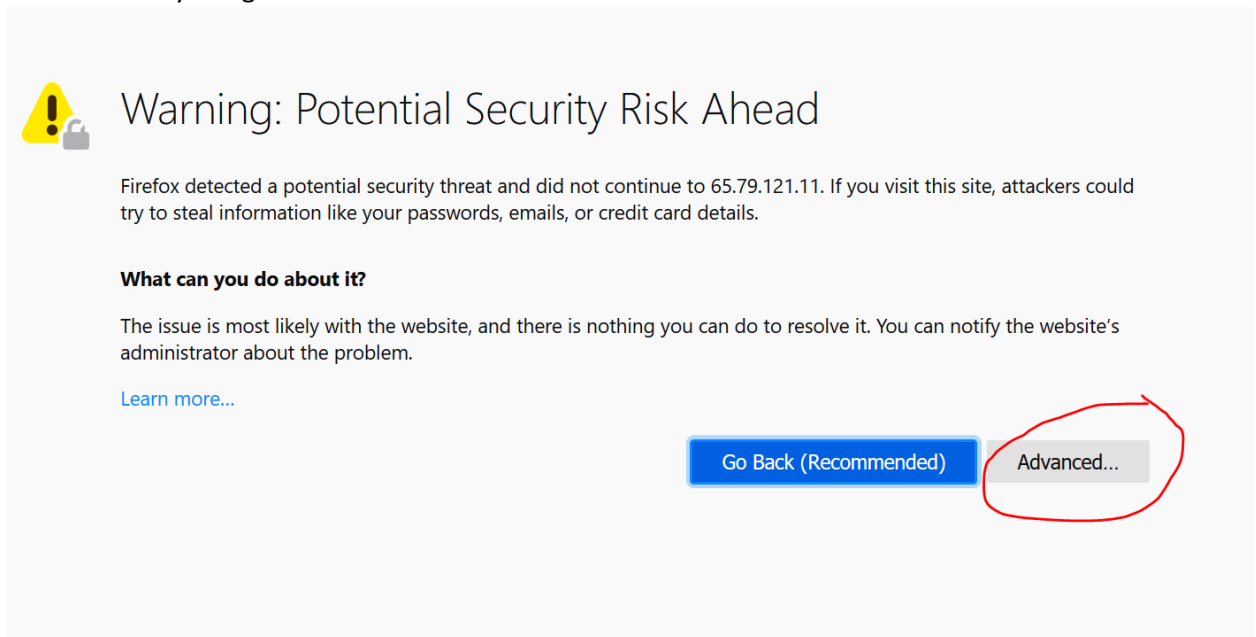
This is instructions on how to install and use the Global Protect VPN client to connect remotely to UICOMP services and network drives. If you do not already have the Global Protect client on your device, please refer to step 1 for instructions on how to download and install. If you already have Global Protect on your device (most University devices will have this) please refer to step 7 on instructions for usage). To find out if you have it installed refer to step 7 as well.

Installation Instructions

1. To get the software you need to go to 65.79.121.11



2. You most likely will get a screen like this. You need to click **Advanced**





3. When you click advanced you will need to accept the risk to continue

try to steal information like your passwords, emails, or credit card details.

What can you do about it?

The issue is most likely with the website, and there is nothing you can do to resolve it. You can notify the website's administrator about the problem.

[Learn more...](#)

Go Back (Recommended)

Advanced...

Websites prove their identity via certificates. Firefox does not trust this site because it uses a certificate that is not valid for 65.79.121.11. The certificate is only valid for gpgateway.uicomp.uic.edu.

Error code: [SSL_ERROR_BAD_CERT_DOMAIN](#)

[View Certificate](#)

Go Back (Recommended)

Accept the Risk and Continue

4. Now you can download. Most will be 64 bit Windows unless you have a Mac



GlobalProtect Portal

[Download Windows 32 bit GlobalProtect agent](#)

[Download Windows 64 bit GlobalProtect agent](#)

[Download Mac 32/64 bit GlobalProtect agent](#)

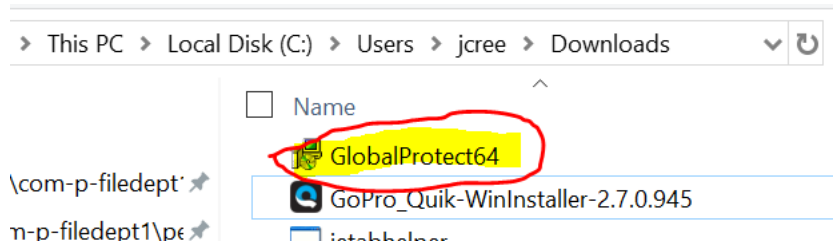
Windows 32 bit OS needs to download and install Windows 32 bit GlobalProtect agent.

Windows 64 bit OS needs to download and install Windows 64 bit GlobalProtect agent.

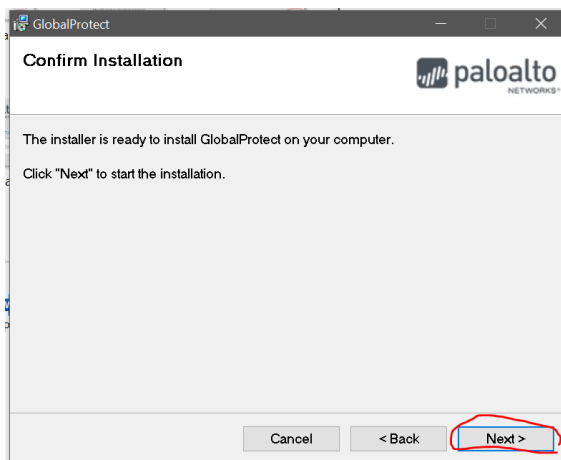
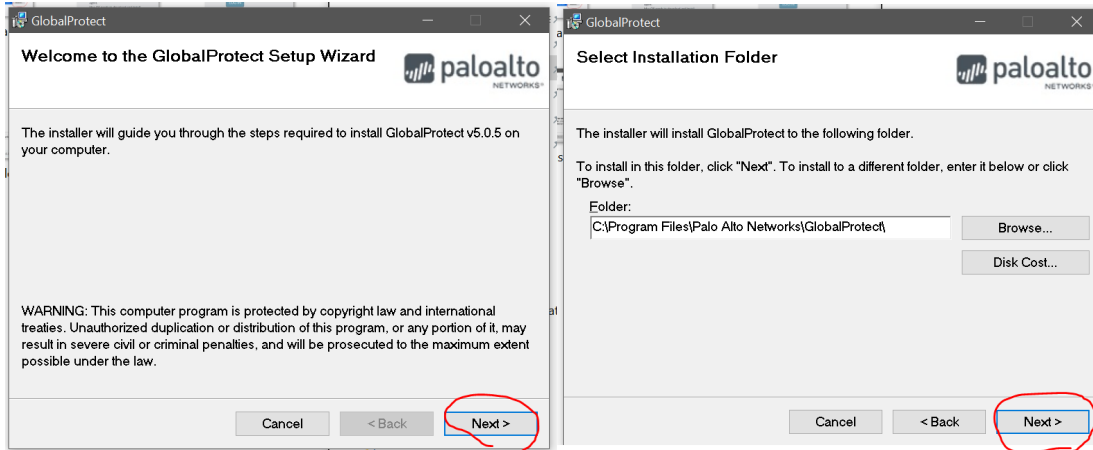
Mac OS needs to download and install Mac 32/64 bit GlobalProtect agent.



5. Once you download file, you can open it to start the install



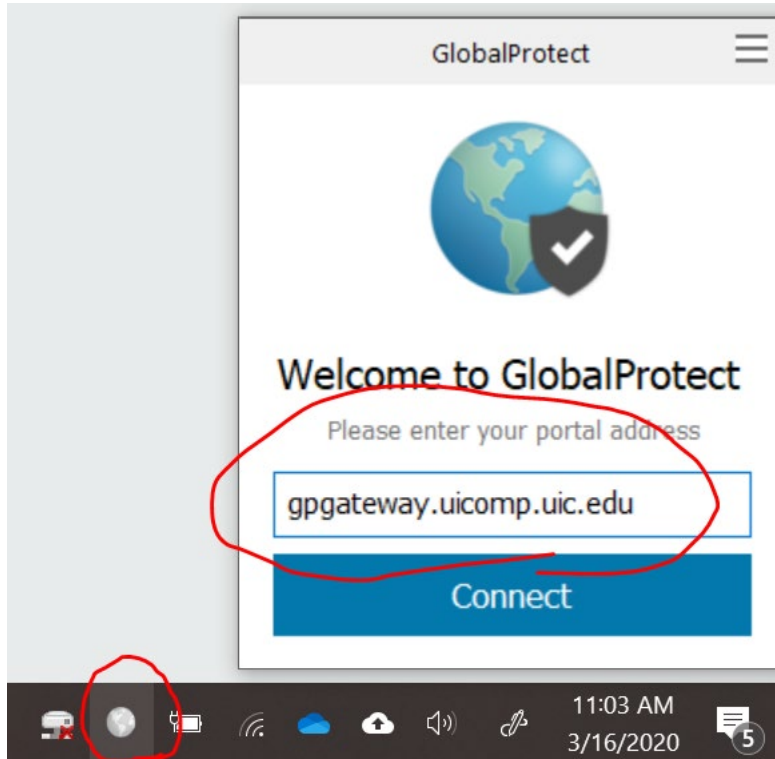
6. After opening the download click **Next** 3 times.





Usage Instructions

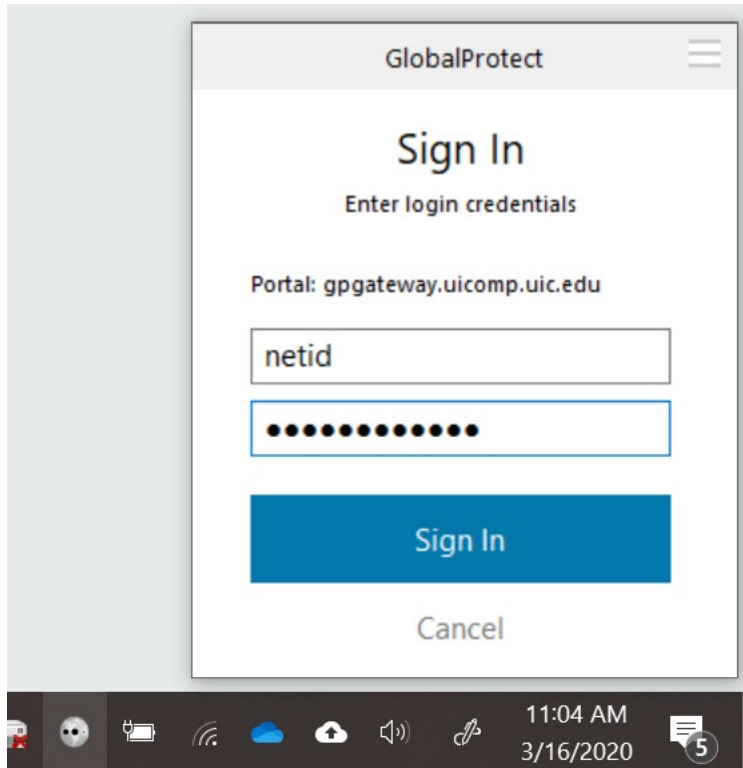
7. Once installed, or if it is already installed, it will show up in your system tray at the bottom right of the screen as shown. You will need to type in **gpgateway.uicomp.uic.edu** into address bar.



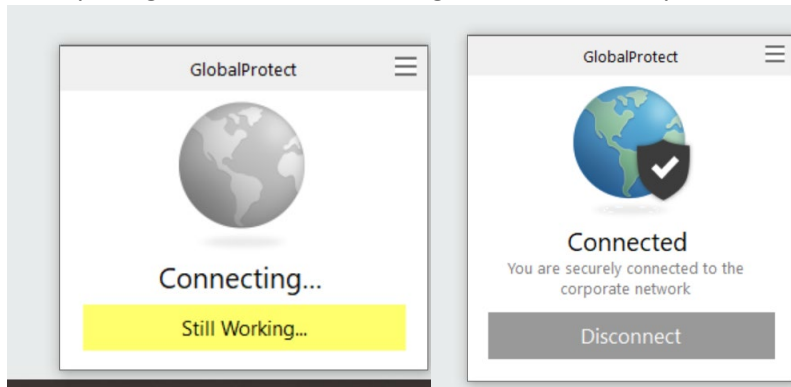


COMMUNICATION&INFORMATION SERVICES

8. After the correct address is entered it will prompt for username and password. Please enter you netid and password here. (please select allow or yes if any pop up occurs during this process)



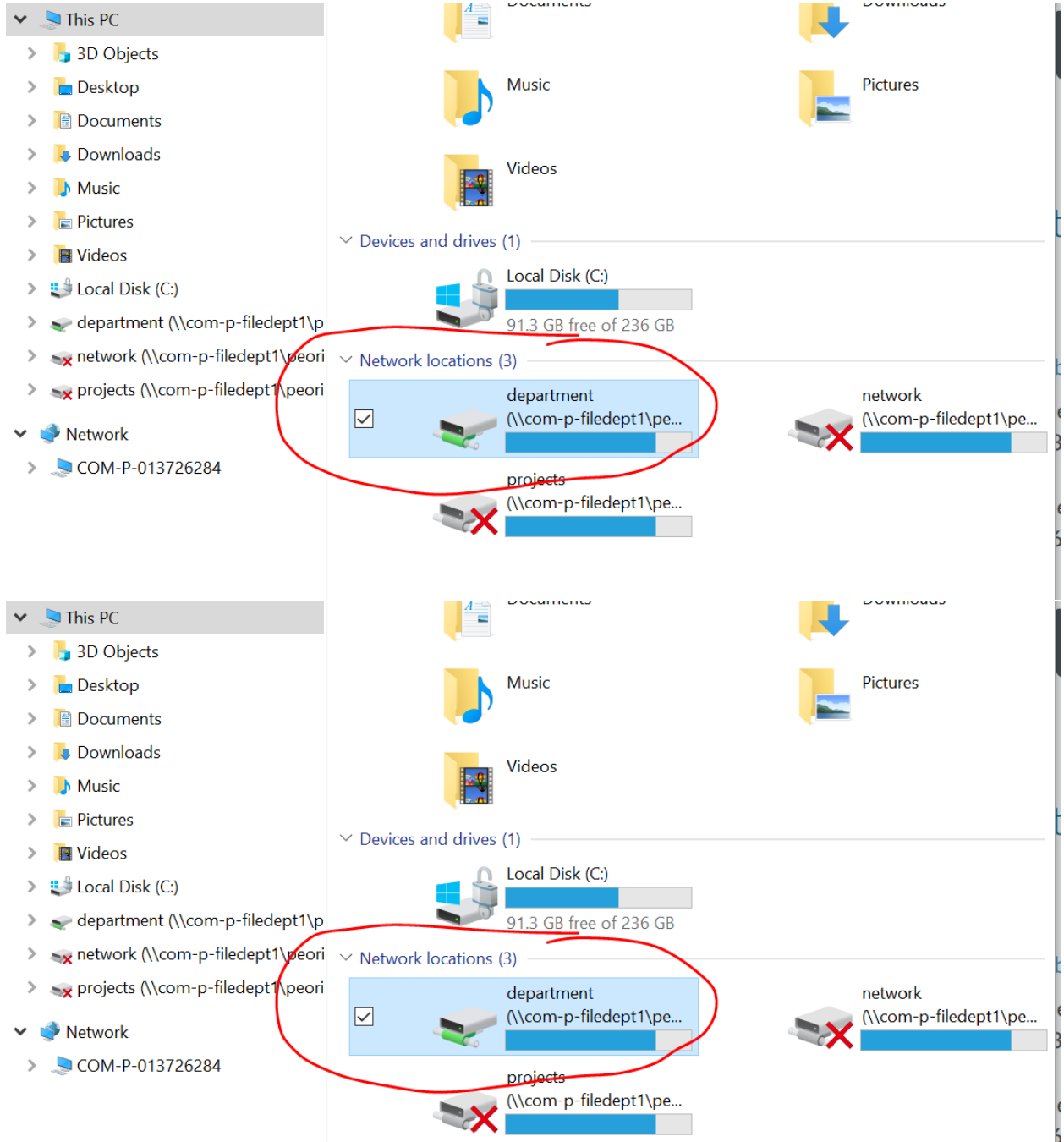
9. Once you sign it will start connecting and will eventually connect.





COMMUNICATION&INFORMATION SERVICES

10. Once connected you will have availability to use UICOMP services including your department and user drives. You will just have to click on the mapped drives even though they have a red X, they will still work





Shortcut

Copy and paste one of these paths into the Windows Explorer address bar:

\\com-p-filedept1\peoria\department\

\\com-p-filehome1\peoria\home\

