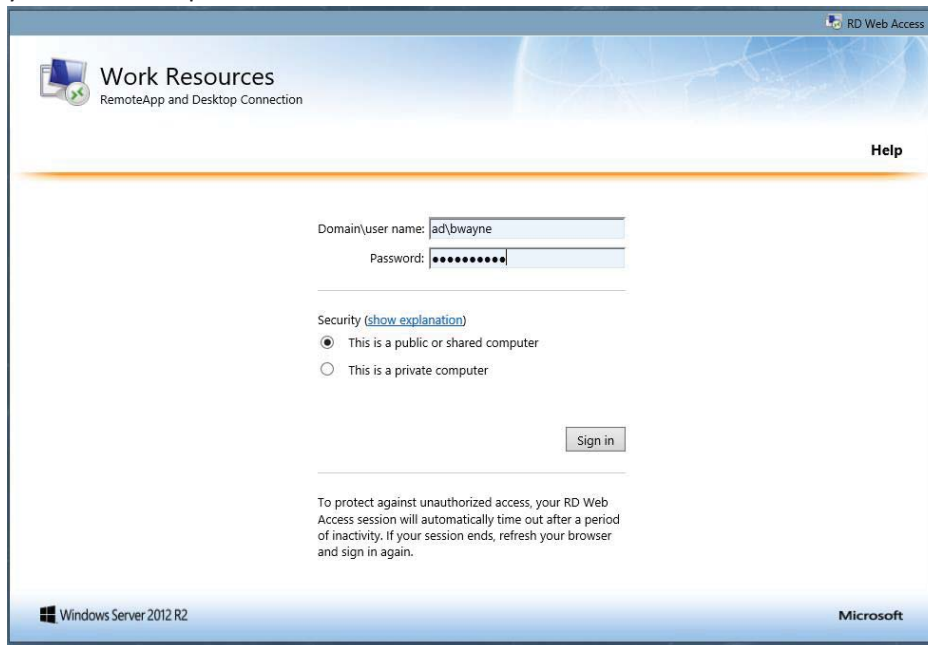


HOW TO CONNECT USING REMOTE DESKTOP

- 1.) Go to <https://com-p-ts2012.ad.uic.edu/rdweb> using Internet Explorer 11, and login using ad\netID and your UIC netID password.



RD Web Access

Work Resources
RemoteApp and Desktop Connection

Help

Domain\user name:

Password:

Security ([show explanation](#))

This is a public or shared computer

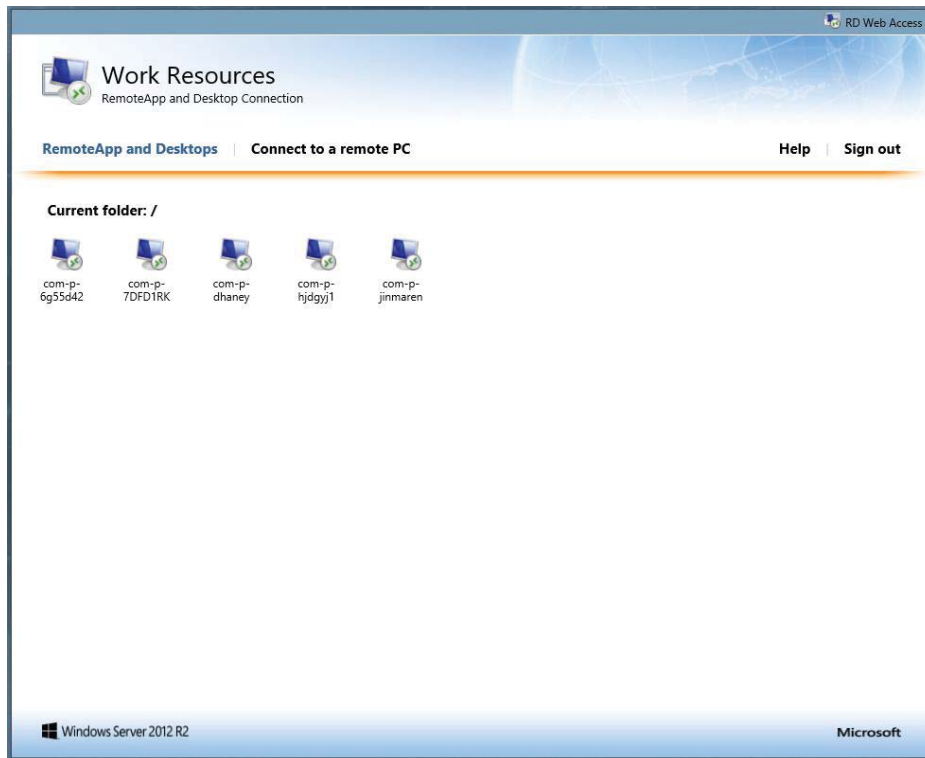
This is a private computer

To protect against unauthorized access, your RD Web Access session will automatically time out after a period of inactivity. If your session ends, refresh your browser and sign in again.

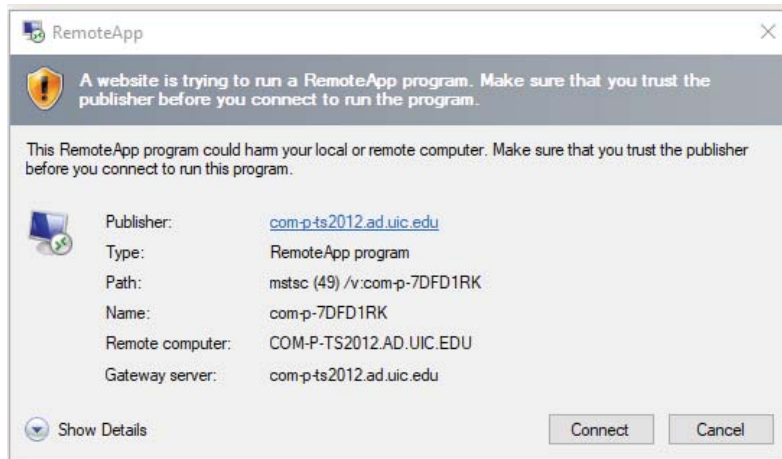
Windows Server 2012 R2 Microsoft



- 2.) You should see your computer name and icon listed on the screen. Click the computer that you like to connect to...



- 3.) A windows alert window may pop up, simply click the Connect button.



- 4.) At this point Remote Desktop should launch and connect to your computer.